

TOWMASTER[®] TRAILERS

MODEL:
T-3T

The Standard for the Road Ahead!



Some equipment shown may be optional



Slip-resistant coating on steel pan deck helps small equipment loading.



Positive locking (over-center) latch system keeps deck secured to the frame.



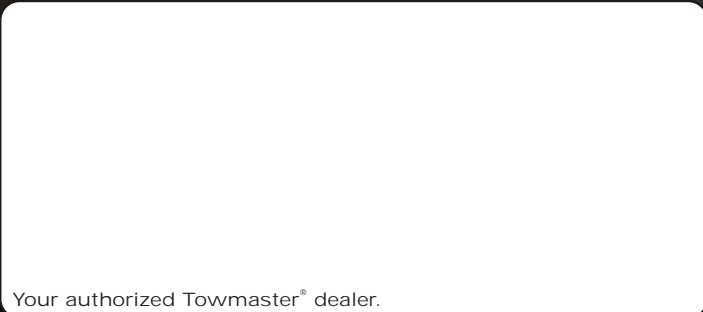
Shock-mounted lighting is standard on T-3T.

Description:

The T-3T trailer has a pan type tilt deck and is designed for hauling small equipment and short loads of sand, rock or debris. The deck features a slip-resistant texture and 8-inch high sides. The low deck height is perfect for a low load angle and the slip-resistant deck assists in equipment loading. The T-3T features a rubber-ride axle for a smooth ride, electric brakes, an adjustable hitch, and a positive locking (over-center) latch system to safely keep the deck secured to the frame.

Quick Specs:

- 14" deck height (empty)
- 54" deck width
- 10' pan style deck
- Electric brakes
- Torflex[®] axle
- Adjustable hitch
- Positive latch system
- LED lights and sealed wiring



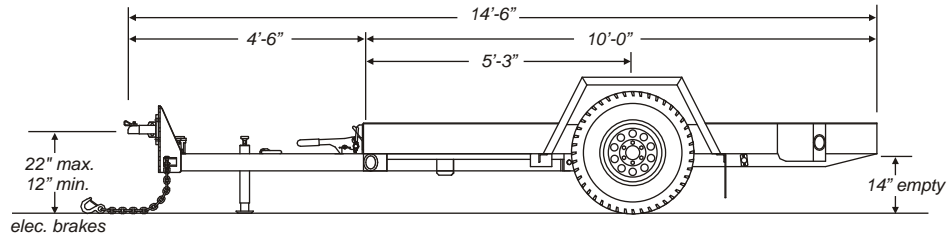
Your authorized Towmaster[®] dealer.

Towmaster, Inc.



800-462-4517

Fax: 320-693-7921



SPECIFICATIONS			
S=Standard O=Optional			
T-3T			
CAPACITY / DIMENSIONS			
Capacity Rating (lbs/kg)	3,500 / 1588		
Approx. Weight (10'-0" / 3048mm)(lbs/kg)	1,100 / 499		
Deck Height (empty)(in/mm)	14 / 355		
Overall Width (in/mm)	80 / 2032		
Load Width (in/mm)	54 / 1372		
TONGUE			
Tongue Length (ft-in/mm)	4-6 / 1372		
Adjustable Hitch	S		
3" Pintle Ring or 2" Ball Coupler	Specify		
3/8" High-Tensile Safety Chain x 40"	Grade 43		
Storage Tray	N/A		
Bolt-on Drop-Leg Parking Jack	5K		
FRAME / RAMPS			
Main Beam	4 x 2 Tubing		
High-Tensile 3" Jr. I-beam Crossmembers	S		
Crossmembers 16" on-center	S		
Headboard (in/mm)	8 / 204		
Side Rails (in/mm)	8 / 204		
Steel Pan Deck	S		
Over-center Deck Latch	Single Point		
Tilt Angle (degrees)	14		
Tie Downs	Forged D-rings		
Number of Tie-Downs (Total / Side)	6 / 3		
SUSPENSION / TIRES			
Dexter Torflex® Rubber-Ride Axle w/5-Year Warranty	S		
Axle Capacity (lbs/kg)	3,500 / 1588		
Hubs	E-Z Lube®		
Electric Brakes	S		
Brake Size (in/mm)	10x2.25 / 250x57		
Battery Break-Away Kit w/Charger	S		
Wheels (in/mm)	15x6 / 381x152		
Wheel Bolt Pattern	6-bolt		
Tires / Load Range Rating	ST225/75R x 15 / D		
Poly Mud Flaps	S		
WIRING / FINISH			
Weather Resistant Sealed Wiring	S		
Weather Resistant Lights	S		
LED Lights	S		
6-pole Round or 7-pole RV Electrical Plug	Specify		
Registration Holder	S		
Rust Inhibiting Primer	S		
Durable, Rust Resistant Top Coat	S		
Durable, Die-Cut UV Resistant Vinyl Decals	S		
Follow local and Federal D.O.T. laws, including Federal Motor Carrier Safety Regulations §392.9, §393.100 and §393.102, and stay within GVWR restrictions.			
OPTIONS			
Hydraulic surge brakes w/free backing (Check local D.O.T. laws)			
Wood deck			

We manufacture a complete line of trailers in capacities from 2000 lbs. to 120,000 lbs. Listed weights are approximate. Trailer weights can vary due to options installed. All dimensions are approximate. See VIN tag for actual GVWR. Check our website or see your authorized dealer for more information. Manufacturer reserves the right to modify, change or discontinue models or options as seen fit without obligation to previously sold units. Written warranty covers each trailer.

Towmaster, Inc., 61381 US Hwy 12, Litchfield, MN 55355
 Toll free: 800-462-4517 phone: 320-693-7900 fax: 320-693-7921
 www.towmaster.com
 Employee Owned, Employee Pride, U.S.A. Made!
 U.S.A. DESIGNED AND BUILT

Photos may not show most recent changes to models.