

# CONTRAIL<sup>®</sup>

by **TOWMASTER**

MODEL:  
C-2T

The Standard for the Road Ahead!

Some equipment shown may be optional



Low deck height makes loading small equipment easier.



Positive locking (over-center) latch system keeps deck secured to the frame.



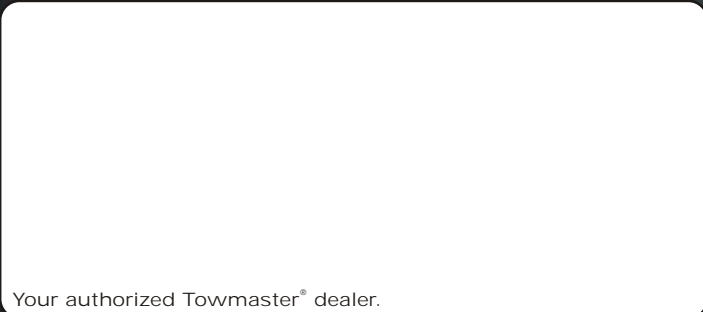
Stake pocket tie-downs located on each corner for load securement.

#### Description:

The C-2T is a pan type tilt deck trailer that is designed for hauling small equipment and short loads of sand, rock or debris. The deck features a slip-resistant texture and 8-inch high sides. The low deck height is perfect for a low load angle and the slip-resistant deck assists in equipment loading. The C-2T features a rubber-ride axle for a smooth ride, an adjustable hitch to fit many tow vehicles and a positive locking (over-center) latch system to safely keep the deck secured to the frame.

#### Quick Specs:

- 12" deck height (empty)
- 54" deck width
- 10' pan style deck
- Torflex<sup>®</sup> axle
- Adjustable hitch
- Positive latch system
- Sealed wiring



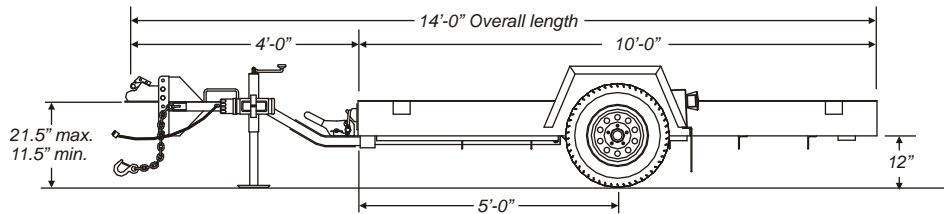
Your authorized Towmaster<sup>®</sup> dealer.

Towmaster, Inc.



800-462-4517

Fax: 320-693-7921



**SPECIFICATIONS**

S=Standard O=Optional

C-2T

**CAPACITY / DIMENSIONS**

Capacity Rating (lbs/kg)	2,000 / 907			
Approx. Weight (10'-0" / 3048mm)(lbs/kg)	780 / 354			
Deck Height (empty) (in/mm)	12 / 305			
Overall Width (in/mm)	74 / 1880			
Load Width (in/mm)	54 / 1372			

**TONGUE**

Tongue Length (ft-in/mm)	4-0 / 1219			
One-Piece Cold-Formed Tongue	S			
Adjustable Hitch	S			
2" Ball Coupler	S			
3/8" High-Tensile Safety Chain x 40"	Grade 43			
Storage Tray	N/A			
Bolt-on Drop-Leg Parking Jack	5K			

**FRAME / RAMPS**

Main Beam	3 x 2 Tubing			
Crossmembers	3 x 2 Angle Iron			
Headboard (in/mm)	8 / 204			
Side Rails (in/mm)	8 / 204			
Steel Pan Deck	S			
Tilt Angle (degrees)	12			
Tie Downs	Stake Pockets			
Number of Tie-Downs (Total / Side)	4 / 2			

**SUSPENSION / TIRES**

Dexter Torflex® Rubber-Ride Axle w/5-Year Warranty	S			
Axle Capacity (lbs/kg)	2,200 / 1000			
Hubs	Idler			
Brakes	N/A			
Wheels (in/mm)	13x4.5 / 330x114			
Wheel Bolt Pattern	5-bolt			
Tires / Load Range Rating	ST175/80R x 13 / C			
Poly Mud Flaps	S			

**WIRING / FINISH**

Weather Resistant Sealed Wiring	S			
Weather Resistant Lights	S			
Incandescent Type Lights	S			
4-Way Flat Electrical Plug	S			
Registration Holder	S			
Rust Inhibiting Primer	S			
Durable, Rust Resistant Top Coat	S			
Durable, Die-Cut UV Resistant Vinyl Decals	S			

Follow local and Federal D.O.T. laws, including Federal Motor Carrier Safety Regulations §392.9, §393.100 and §393.102, and stay within GVWR restrictions.

**OPTIONS**

Wood deck				
-----------	--	--	--	--

We manufacture a complete line of trailers in capacities from 2000 lbs. to 120,000 lbs. Listed weights are approximate. Trailer weights can vary due to options installed. All dimensions are approximate. See VIN tag for actual GVWR. Check our website or see your authorized dealer for more information. Manufacturer reserves the right to modify, change or discontinue models or options as seen fit without obligation to previously sold units. Written warranty covers each trailer.

Towmaster, Inc., 61381 US Hwy 12, Litchfield, MN 55355  
 Toll free: 800-462-4517 phone: 320-693-7900 fax: 320-693-7921  
 www.towmaster.com  
 Employee Owned, Employee Pride, U.S.A. Made!  
 U.S.A. DESIGNED AND BUILT

Photos may not show most recent changes to models.